

RETAIL WEIGHING SOLUTION™



Dual interval technology



Bendable head bar



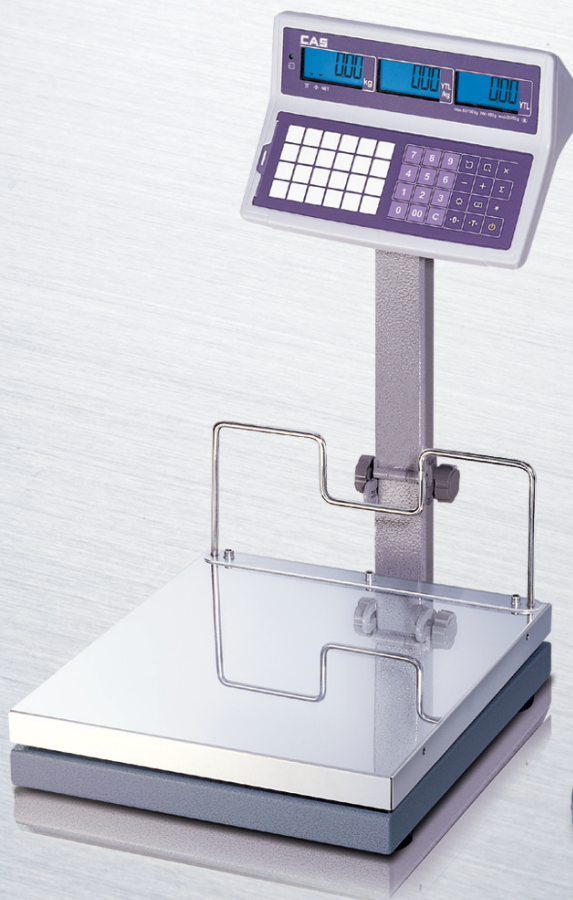
Dual LCD display with
backlight

EB SERIES

Retail Bench Scale

EB series are suitable for any industrial environment as a weighing solution. It offers capacities from 30kg to 150kg with variety of flexible applications.

- Dual interval for better accuracy
- Label or ticket printer combination



CAS

EB SERIES | Retail Bench Scale

SPECIFICATIONS

Model	EB		EB-L	
Capacity (kg)	30/60	60/150	30/60	60/150
Readability(e=d) (g)	10/20	20/50	10/20	20/50
Tare Range (kg)	-29.99	-59.98	-29.99	-59.98
External Resolution	1/3,000 (Dual interval)			
Internal Resolution	1/60,000			
Display Digit	6/6/6(Weight/Unit Price/ Total Price)			
Display Type	LCD			
Operation Temperature	-10°C ~ 40°C			
Power	AC Adapter DC 12V, Rechargeable battery (6V, 5Ah)			
Battery Life	Approx. 200hours (Backlight off), 12 hour recharge time			
Dimensions(mm)	350(W) x 470(D) x 584(H)	415(W) x 719(D) x 816(H)		
Platter Size(mm)	350(W) x 400(D)	400(W) x 520(D)		
Product Weight (kg)	14.9	15.6		

FEATURES

- 24 direct PLUs and total 200 PLUs
- 1/3,000 dual interval resolution for better accuracy
- Rechargeable battery operation (Max 200hours)
- RS-232 interconnecting interface
- LCD display with blue backlight
- Compact design and easy to operate
- Auto power-off function

STANDARD ACCESORIES

- Blue backlight
- AC adapter (12V)
- Dust skin cover
- RS-232C interface
(Connection with PC or printer)

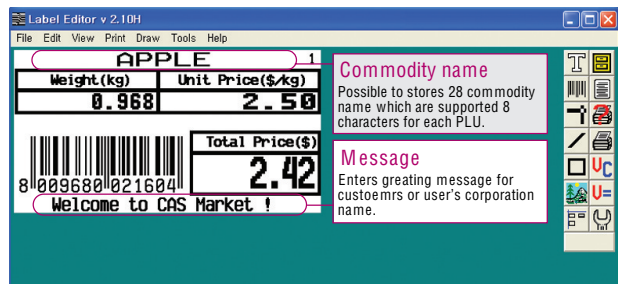
OPTIONS

- Back rail (Applied only EB-L Type)
- Printers: DLP-50 / DEP-50
- 6V,10Ah Rechargeable battery
(Applied only EB type)
* Approx. 500hrs used after 20hrs recharging



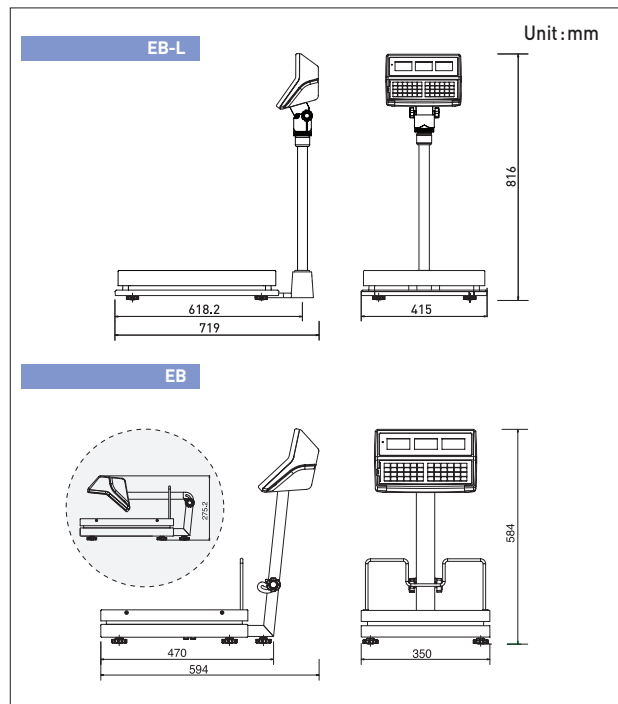
CONNECTION LABEL OR TICKET PRINTER

- EB series can connect with label or ticket printer via RS-232C serial port
- Provided label/ticket editing PC software



The label format shows commodity name weight, total price, unit price and message.

DIMENSIONS



CAS

CAS BLDG., # 440-1, SUNGNAE-DONG,
GANGDONG-GU, SEOUL, KOREA

TEL_ 82 2 2225 3500

FAX_ 82 2 475 4668

<http://www.globalcas.com>

Specifications are subject to change for improvement without prior notice.